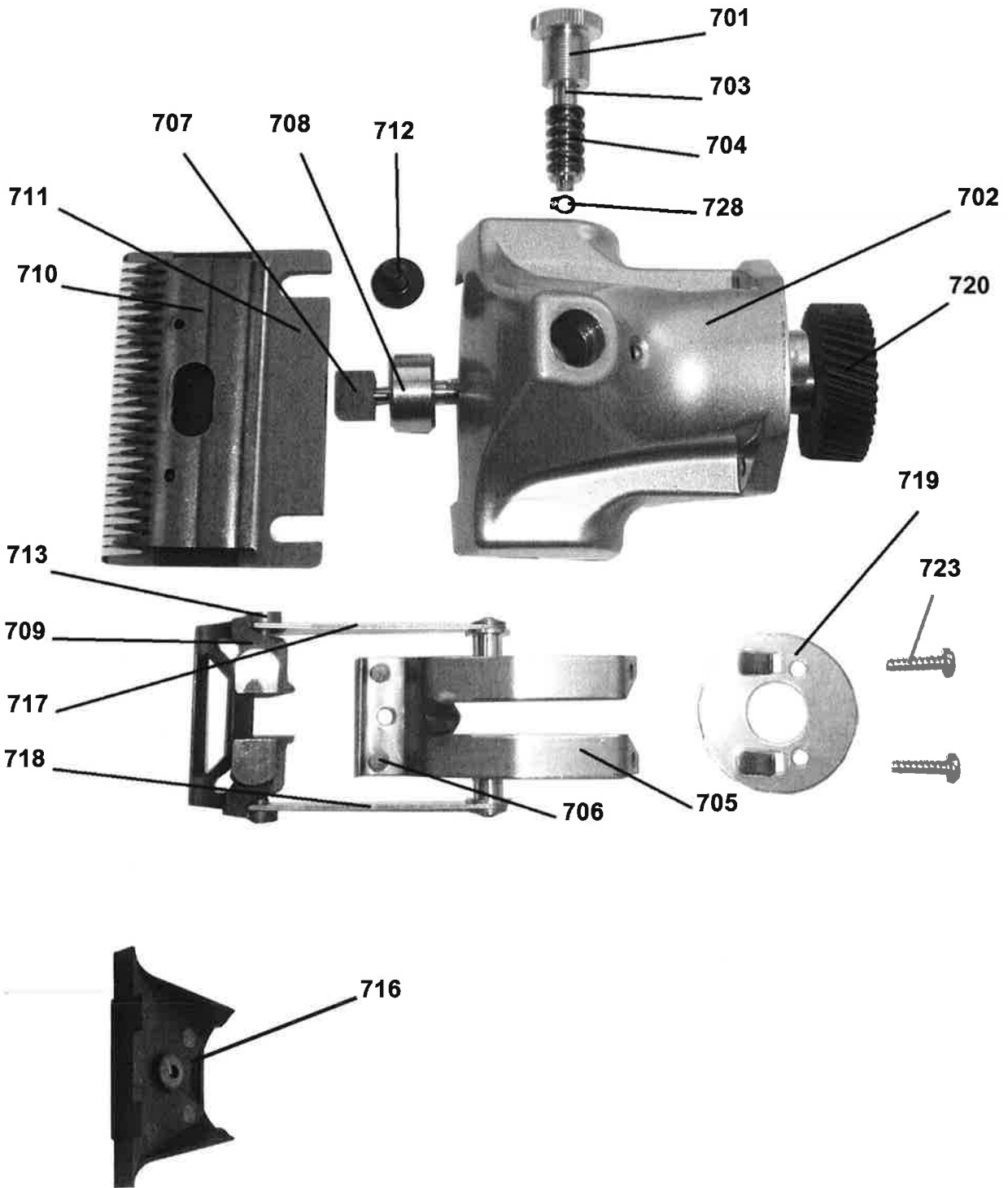


7 EXPLODED VIEW / SPARE PARTS

7.1 Clipper Head & Cutli



Pos	Description	Part-No.
701	adjusting screw zinc plated	19-8001826
702	<i>clipping head housing 8 (silver)</i>	19-8001800
702	<i>clipping head housing 8 (black)</i>	19-8001802
703	spring guide pin	19-8001824
704	pressure regulation spring	19-3012014
705	sliding pin sheet metal	19-8001820
706	sliding pin HGW (2 pieces)	19-3030106
707	HGW-eccentric	19-3030107
708	MS-eccentric	19-3030108
709	carrier	19-3030109
710	cutter	
711	comb	
712	screws for combs (2 pieces)	19-3030212
713	screw M 3.5 (2 pieces)	19-3030113
714	screw for hand protection M4x10	9004001065022
716	hand protection, black	19-3030116
717	oscillating spring, right in clipping direction	19-3030117
718	oscillating spring, left in clipping direction	19-3030118
719	cover plate	19-3030119
720	gearwheel (41 teeth) with shaft	19-3030120
723	screw 3,5 x 13 (2 pieces)	9035001362122
727	EJOT PT-screw KA 40x25 (2 pieces)	9040002500042
728	locking ring 4.0	9004000053022

Pos	Description	Part-No.
1	screw 4,0 x 20 (5 pieces)	9040002000042
2	<i>motor housing – upper part, Cutli</i>	19-8001***
3	flat spring	19-0300029
4	spring for carbon brushes (2 pieces)	19-0300030
5	air filter, Cutli	19-8001044
6	<i>motor housing – lower part- Cutli</i>	19-8001***
7	circuit plate 0,4 A complete	19-8001030
8	rotor complete with No. 9, 10	19-8001040
9	ball-bearing 608 2Z (gearside)	19-0300003
10	ball-bearing 626 2Z (collectorside)	19-3007307
11	O-ring for bearing 608 2Z	19-0300024
12	O-ring for bearing 626 2Z	19-3007305
13	ongoing magnetic field	19-8001038
14	motor protection switch 0,4 A	19-0350410
15	on and off switch	19-8001034
16	on and off switch cap	19-8001036
17	cable protection	59-0020213
18A	lead (cable) with plug (EURO)	19-0350216
18B	lead (cable) with plug (GB)	19-0300203
19	carbon brushes (2 pieces)	19-0300005
20	adaptor	19-8001828

In case of ordering or claiming a crankcase please add the required colour. Detailed numbers referring to all colours which are available are not listed in the instruction manual.